

Provided for non-commercial research and education use.
Not for reproduction, distribution or commercial use.



This article appeared in a journal published by Elsevier. The attached copy is furnished to the author for internal non-commercial research and education use, including for instruction at the authors institution and sharing with colleagues.

Other uses, including reproduction and distribution, or selling or licensing copies, or posting to personal, institutional or third party websites are prohibited.

In most cases authors are permitted to post their version of the article (e.g. in Word or Tex form) to their personal website or institutional repository. Authors requiring further information regarding Elsevier's archiving and manuscript policies are encouraged to visit:

<http://www.elsevier.com/copyright>



ELSEVIER

Available online at www.sciencedirect.com
**Current Opinion in
Neurobiology**

Cerebellar development and disease

 Kathleen J Millen¹ and Joseph G Gleeson²

The molecular control of cell-type specification within the developing cerebellum as well as the genetic causes of the most common human developmental cerebellar disorders have long remained mysterious. Recent genetic lineage and loss-of-function data from mice have revealed unique and nonoverlapping anatomical origins for GABAergic neurons from ventricular zone precursors and glutamatergic cell from rhombic lip precursors, mirroring distinct origins for these neurotransmitter-specific cell types in the cerebral cortex. Mouse studies elucidating the role of *Ptf1a* as a cerebellar ventricular zone GABAergic fate switch were actually preceded by the recognition that *PTF1A* mutations in humans cause cerebellar agenesis, a birth defect of the human cerebellum. Indeed, several genes for congenital human cerebellar malformations have recently been identified, including genes causing Joubert syndrome, Dandy-Walker malformation, and pontocerebellar hypoplasia. These studies have pointed to surprisingly complex roles for transcriptional regulation, mitochondrial function, and neuronal cilia in patterning, homeostasis, and cell proliferation during cerebellar development. Together, mouse and human studies are synergistically advancing our understanding of the developmental mechanisms that generate the uniquely complex mature cerebellum.

Addresses

¹ Department of Human Genetics, University of Chicago, 920 East 58th Street, Cummings Life Sciences Center 319, Chicago, IL 60637, United States

² Neurogenetics Laboratory, Department of Neurosciences, University of California, San Diego, Howard Hughes Medical Institute, Leitchag 3A16, 9500 Gilman Drive, La Jolla, CA 92093-0691, United States

Corresponding author: Millen, Kathleen J (kmillen@genetics.uchicago.edu) and Gleeson, Joseph G (jogleeson@ucsd.edu)

Current Opinion in Neurobiology 2008, **18**:12–19

This review comes from a themed issue on
Development
Edited by Liqun Luo and Gord Fishell

Available online 29th May 2008

0959-4388/\$ – see front matter

© 2008 Elsevier Ltd. All rights reserved.

DOI [10.1016/j.conb.2008.05.010](https://doi.org/10.1016/j.conb.2008.05.010)

Introduction

The basic circuitry of the mature cerebellum has been known for more than 100 years; however, the developmental mechanisms that generate this complexity have only begun to be elucidated much more recently. The

study of spontaneous and targeted mutations in mice that cause congenital ataxias has been fundamental to this progress. More recently, the use of powerful new genetic fate-mapping technology in cerebellar mutant mice has driven many of the new molecular insights of cerebellar development. Concurrently, multiple human cerebellar malformations have been delineated because of improvements in neuroimaging and improved classification of these disorders. This has fueled the identification of several disease genes leading to a new molecular classification of these disorders and permitted construction of mouse models to delineate the underlying pathogenesis. Together, mouse and human genetic approaches are synergistically driving significant progress toward an improved understanding of the basic mechanisms of cerebellar development.

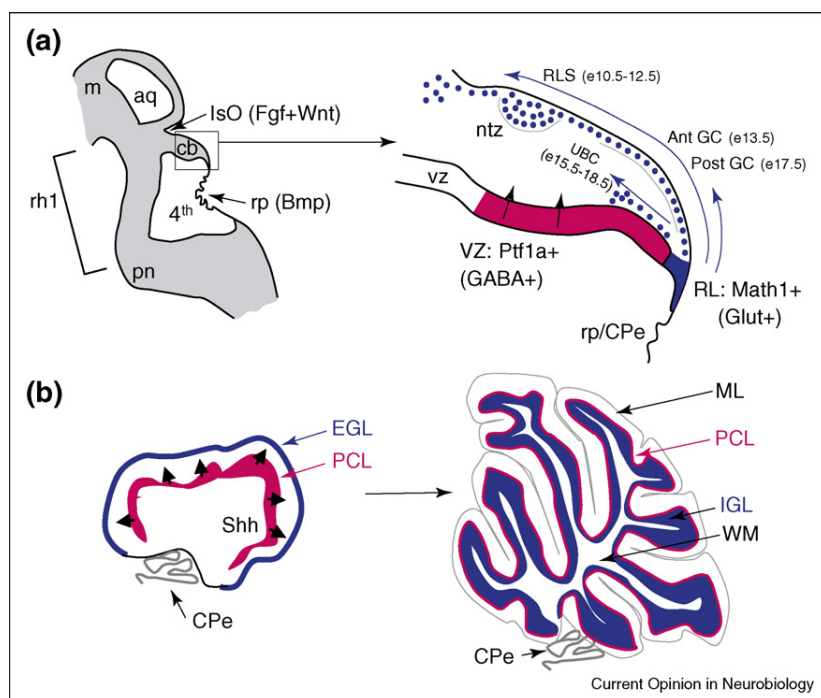
Overview of cerebellar development and recent findings in mice

Cerebellar morphogenesis

The cerebellum arises from dorsal rhombomere 1 of the anterior hindbrain and is positioned along the anterior/posterior axis of the neural tube by Fgf and Wnt signals from the isthmic organizer located at the midbrain–hindbrain junction [1]. The developing cerebellum is also influenced by the adjacent fourth ventricle roof plate, which secretes Bmp, Wnt, and retinoic acid [2^{••},3[•]] (Figure 1a). Mouse fate-mapping experiments have shown that during early embryogenesis, there is a 90° rotation of dorsal rhombomere 1 which converts the rostral–caudal axis of the early neural tube into the medial–lateral axis of the wing-like bilateral cerebellar primordia [4^{••}]. As neurogenesis progresses, the bilateral primordia fuse on the dorsal midline over the fourth ventricle to establish the medial vermis and lateral cerebellar hemispheres [5].

Cerebellar neurons are generated from two anatomically and molecularly distinct progenitor zones within the primordia or cerebellar anlage. These are the cerebellar ventricular zone (VZ), expressing the bHLH factor *Ptf1a*, and the more dorsally located rhombic lip (RL), expressing the bHLH factor *Math1* (Figure 1a). Newly differentiating neurons, including cerebellar Purkinje cells (PCs), are postmitotic as they leave the VZ and migrate radially within the developing anlage. By contrast, cells exiting the RL migrate over the anlage forming an external layer of cells that continue to proliferate. Granule neuron progenitors within this external granule layer (EGL) are driven to proliferate through the reception of a mitotic Shh signal received from the underlying differentiating PCs within the anlage (Figure 1b). Exten-

Figure 1



Overview of mouse cerebellar neurogenesis. **(a)** Schematic parasagittal section through the midbrain/hindbrain region of a mouse e12.5 neural tube. The cerebellum is a dorsal derivative of hindbrain rhombomere 1 (rh1) under the influence of signaling from both the isthmus organizer and fourth ventricle roof plate. Within the developing cerebellar anlage, distinct progenitor zones form marked by two distinct transcription factors, Math1 and Ptf1a. Math1 expression in the rhombic lip (rl) is induced by Bmp signaling from the roof plate (rp) which itself differentiates into the choroid plexus (Cpe). Genetic fate-mapping studies have shown that Math1+ RL progenitor cells give rise to multiple glutamatergic+ derivatives in a time-dependent sequence. Early progenitors feed into the rostral migratory stream (RLS). The RLS migrates over the cerebellar anlage and gives rise to multiple brain stem precerebellar nuclei, including the pontine nuclei (pn). RLS cells next give rise to glutamatergic deep cerebellar nuclei (DCN), which settle into the nuclear transitory zone (ntz). Math1+ RL cells also generate cerebellar granule cells (GC) that form the cerebellar external granule layer in an anterior to posterior temporal gradient. Unipolar brush cells (UBCs) are the final Math1+ RL population and migrate through the cerebellar white matter. Concurrently, the ventricular zone (VZ) of the cerebellar anlage expresses Ptf1a. These progenitors exit the cell cycle, migrate radially into the cerebellar anlage and give rise to glutamatergic deep cerebellar nuclei (DCN), and cerebellar interneurons including Basket and Stellate cells. m: midbrain; aq: aqueduct. **(b)** Schematic midsagittal section of mouse cerebellum at day of birth. The Purkinje cell layer (PCL) is located underneath the EGL and secretes Shh which is received by EGL cells and drives their extensive proliferation such that granule cells become the most abundant neurons in the cerebellum and in the entire brain. Upon differentiation, EGL cells migrate through the PCL layer to form the IGL of the mature cerebellum. Their trailing axons form the molecular layer (ML). Purkinje cells project into the cerebellar white matter (WM). Drawings are not to scale.

sive cell interactions and inward radial migration of EGL cells to form the IGL are required to achieve the final structure of the mature cerebellum [6,72*].

Distinct origins for GABAergic and glutamatergic cerebellar neurons

Recent loss-of-function and fate-mapping experiments have demonstrated that Ptf1a and Math1 are not only useful markers for each cerebellar progenitor zone but also essential for the generation of correctly specified progenitors within their respective germinal zones. In the absence of the Ptf1a, the cerebellar VZ fails to generate all of the known GABAergic cerebellar neuronal subtypes including PCs, stellate and basket cells and a subset of deep cerebellar neurons, which constitute the main outflow tract of the cerebellum [7*,8**]. Fate map-

ping of Ptf1a+ cells in wild-type mice demonstrates that Ptf1a+ VZ cells are normally fated to produce all of these GABAergic cerebellar cell types and thus, their loss is caused by a primary failure of the VZ to produce appropriate neurons in the absence of Ptf1a. Fate mapping in Ptf1a^{-/-} mutants also demonstrates that some mutant cerebellar VZ progenitor cells aberrantly migrate and express typical RL markers such as Math1, Reelin, and Zic1/2, indicating a transformation of the mutant cerebellar VZ descendants to the adjacent RL cell fates. This suggests that the GABAergic fate choice in the cerebellum is based upon a relatively simple genetic switch [9].

It has long been known that the cerebellar RL expressing Math1 is the source of all cerebellar granule neurons [10,11]. Recent genetic fate mapping of Math1+ cells,

combined with newly developed cerebellar slice culture assays have completely revolutionized our understanding of the cerebellar RL. Surprisingly, the Math1+ RL gives rise not only to glutamatergic granule neurons but also to all known glutamatergic neurons of the cerebellum. These include both unipolar brush cells, which serve as a relay cell amplifying the excitatory effects of mossy afferent fibers on granule cells [12], as well as the glutamatergic subset of deep cerebellar nuclei neurons [13–15,16^{**},17^{*},18] (Figure 1a). Thus, the well-ordered cellular organization of the mature cerebellum is achieved through the bipartite origins of its constituent neurons. Despite the complexity of the final mature structure, the cerebellum is not that different from the developing spinal cord and telencephalon, where distinctly ordered progenitors along the dorsal/ventral axis of the neural tube give rise to cells of distinct neurotransmitter phenotypes [18].

In contrast to the apparent switch in cell-fate *Ptf1a*^{-/-} mutants, there is no evidence that Math1^{-/-} cells transform their cell fate. In Math1^{-/-} mutants, the RL still forms, but there is a failure to produce granule neurons. As a result, there is a failure to generate the EGL [19]. The new fate-mapping data reveal that all other Math1+ lineage cells also fail to be generated [13,14]. Thus, Math1 is not required for the formation of the RL or specification of neurotransmitter identity. On the basis of inducible fate mapping with Math1-CreER^{T2} mice, recent studies have even more surprisingly demonstrated

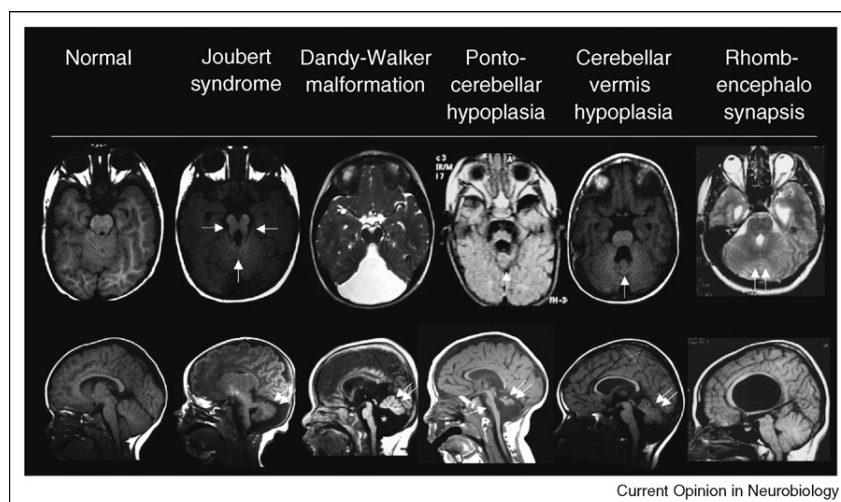
that Math1+ cells are not the definitive stem cell population of the RL. Rather, Math1+ progenitor cells are continuously induced from an RL stem cell population that has yet to be identified [14].

So what are the mechanisms that segregate the VZ and RL? Recent studies have determined that both RL induction and Math1 expression is dependent on Bmp-derived signals from the adjacent roof plate [2^{**},20]. Further, the roof plate Bmp signal is countered by antagonistic Notch1 activity within the cerebellar VZ [21^{**}]. Thus, antagonism between the Notch and BMP signaling pathways regulates the differentiation of cerebellar progenitors throughout the period of cerebellar neurogenesis.

Human congenital ataxias and their causes

The identification of *Ptf1a* as a major player in cerebellar neurogenesis has been a major recent advance in cerebellar developmental biology. Interestingly, *Ptf1a* (a gene well known for its role in pancreas development [22]) initially came to the attention of cerebellar biologists through human genetic analysis. Mutation in the *PTF1A* gene was first identified in a large family segregating both cerebellar agenesis and neonatal diabetes [23]. Subsequent work on this gene in mice revealed its crucial role in cerebellar GABAergic neuronal specification and also revealed that the complete cerebellar agenesis phenotype seen at birth in both humans and mice is actually a secondary phenotype. In the absence of *Ptf1a*, the failure

Figure 2



Spectrum of human cerebellar malformations on MRI. Top row: axial images at the level of the midbrain-hindbrain junction (isthmus). Bottom row: midline sagittal images. In normal, isthmus shape is relatively circular, and cerebellar vermis is full. In all of the conditions except rhombencephalosynapsis the cerebellar vermis is hypoplastic (double arrows on bottom row). In Joubert syndrome (JSRD) the isthmus takes the shape of a 'molar tooth' (arrows). In Dandy-Walker malformation (DWM), the posterior fossa is full of fluid (white field) and bottom shows the cystic dilatation of the fourth ventricle (*), which is rotated anteriorly. In pontocerebellar hypoplasia (PCH) the brainstem is also involved. Note small isthmus and vermis (arrow, top) and reduced brainstem volume (arrow, bottom). Cerebellar vermis hypoplasia (CVH) shows reduced vermis without other associated features. Rhombencephalosynapsis shows fusion of the two cerebellar hemispheres, and the vermis is replaced by this fusion (double arrows, top).

to generate GABAergic neurons secondarily leads to massive prenatal death of all cerebellar glutamatergic neurons because their GABAergic synaptic partners are not present [7[•]]. Together, the *Ptf1a* studies highlight the synergy between human and mouse genetics and suggest that human cerebellar congenital ataxias can greatly inform our understanding of the basic genes and mechanisms driving cerebellar development.

Overview of human congenital ataxias

Cerebellar agenesis is one of the many human congenital ataxias, which are a group of conditions that present in the first few years of life with motor disability, muscular hypotonia and incoordination, and impaired development. Characteristically, such patients display some degree of cerebellar malformation that typically involves the vermis, and which may accompany other developmental brain abnormalities and other non-CNS developmental abnormalities. Brain imaging studies have thus become a key element in distinguishing each malformation and has allowed for both clinical and genetic delineation of several distinct syndromes (Figure 2). Many of the newly identified causative genes have not previously been implicated in cerebellar development. The subsequent generation of related mouse models is just now beginning to illuminate many new aspects of cerebellar developmental biology.

Joubert syndrome and related disorders

Joubert syndrome and related disorders (JSRDs) are a group of recessively inherited conditions that are characterized clinically by congenital ataxia, hypotonia, episodic breathing dysregulation, and mental retardation [25]. The signature feature of this group of disorders is the 'molar tooth' sign. This sign is a specific malformation of the brainstem, cerebellum, and the cerebellar peduncles, which together, give the appearance of a tooth-like shape in axial MRI images at the level of the midbrain–hindbrain junction (isthmus) [26] (Figure 2). It has been recognized that many patients with Joubert syndrome identified by brain imaging studies also have retinal dystrophy and nephronophthisis (renal fibrocystic disease), two conditions related to defective function of primary cilia, cellular appendages of unclear function. Several recent proteomics and bioinformatics studies have identified lists of candidate cilia-functioning proteins [27]. These data, together with availability of large, consanguineous families segregating JSRD, have sped the discovery of several of the responsible JSRD genes. Currently, there are seven genetic loci that have been mapped for the various subtypes of Joubert syndrome, and the first five genes have been identified. These include *Ahleson-helper integration-1 (AHI1)*, *Nephrocystin-1 (NPHP1)*, *Centrosomal protein-290 (CEP290)*, *Transmembrane protein 67 (TMEM67)*, and *Retinitis pigmentosa GTPase regulator interacting protein-like (RPGRIP1L)*. Each of the genes encodes a modular scaffolding protein without clear enzymatic domains, but

sharing several protein-interaction domains of unknown function, suggesting that they may be a part of a signaling complex [28^{••},29^{••},30,31,32^{••},33^{••},34[•],35[•],36[•]]

The Joubert syndrome connection with cilia

Although the function of JSRD proteins remains largely unknown, recent evidence suggests roles in either mediating the assembly/stability of cilia or mediating cargo transport within cilia. When tested directly, at least three of the encoded proteins, NPHP1, CEP290, and RPGRIP1L have demonstrated localization to the basal body or cilium [32^{••},35[•],36[•],37], further suggesting a role at the cilium or basal body. Remarkably, *CEP290* was concurrently identified as mutated in the *rd16* mouse [38^{••}] and *rdAc* cat [39^{••}] both models of retinal dystrophy. In these models there is a failure to transport rhodopsin to the photoreceptor outer segment and of disk morphogenesis. Because the photoreceptor outer segment is a giant modified cilium, the genetic evidence suggests a defect in ciliary function. Similarly, there is a failure to transport G proteins into the cilia of olfactory sensory neurons *rd16* mutant mice resulting in anosmia [40]. Finally, one JSRD patient with a proven *CEP290* mutation displayed complete *situs inversus*. Together, these data suggest a link between JSRD and other ciliopathies [41]. But what could be the role of cilia proteins in the developing cerebellum?

In the developing cerebellum, primary cilia have been identified ultrastructurally in both PCs and granule cell progenitors [42,43]. Indeed, primary cilia are appendages found on most eukaryotic cells, and are defined by a membrane-surrounded structure with a 9 + 0 or 9 + 2 microtubule structure and a basal body (centrosome) at the base. Primary cilia are differentiated from motile cilia found in many anatomic locations (Henson's node, respiratory epithelium, sperm cerebral ependyma), which display a patterned beating movement to produce fluid flow. The function of primary cilia is just now coming to the forefront of science, with the recent discovery of evolutionary conservation of many of the factors required for retrograde and anterograde transport in lower ciliated organisms.

The current hypothesis is that JSRD represent primary disorders of ciliary transport within cellular primary cilia in the developing cerebellum. This hypothesis is supported by the analysis of mice with conditional mutations in the *Kif3a* and *IFT88* genes, which encode intraflagellar transport proteins that are required for cilia formation and maintenance. These mice have cerebellar morphological defects that mirror those seen in JSRD. Mechanistically, conditional loss of *Kif3a* and *IFT* in the developing mouse cerebellum results in the failure of Shh-dependent proliferation of granule neuron progenitors within the developing cerebellar EGL [44[•],45[•]] (Figure 1b). Because cilia are required to process both Shh and Wnt signals in a

range of cell types [46–49], it is hypothesized that the JSRD genes encode mediators of these signal transduction pathways at the primary cilium and that the primary defect in JSRD is compromised granule cell proliferation. This in turn, leads to significant cerebellar hypoplasia. Axonal migration defects causing the distinctive ‘molar tooth’ sign may also be caused by ciliary defects; however, until JSRD gene-specific knock-outs are available, these hypotheses cannot be directly tested.

Dandy-Walker malformation and cerebellar vermis hypoplasia

Dandy-Walker malformation (DWM) is the most common congenital malformation of the human cerebellum. DWM is characterized by a severe hypoplastic cerebellar vermis which is rotated away from the brainstem and a significantly enlarged fourth ventricle in an enlarged posterior skull [50,51]. Although there is cerebellar hypoplasia, DWM is not associated with the ‘molar tooth’ sign of JSRD and in contrast to JSRD, DWM very rarely segregates in a Mendelian fashion and has a very low recurrence risk in families [52*,53]. The identification of rare patients with chromosomal abnormalities has opened the door to DWM gene characterization.

The first DWM causative genes were identified by physical mapping of interstitial deletions of chromosome 3q24 (del3q24) in several DWM patients [54**]. This region encompasses the adjacent *ZIC1* and *ZIC4* genes, important members of the small *Zinc finger in cerebellum* family of transcription factors. Mice with heterozygous deletion of the orthologs of these two linked transcription factors have a phenotype that resembles human DWM. These mutants provide the first model to delineate the pathogenesis of DWM. Because *Zic* proteins interact with Gli proteins, which are obligate downstream components in Shh signal reception, it has been hypothesized that *Zic* proteins modulate Shh signaling [55–57] and may be involved in Shh-regulated EGL proliferation. The role of *Zic4* is not well understood, but *Zic1* activity is required to maintain EGL cells in a progenitor state [57,58], though a direct role in the reception of Shh signaling has not been established. A diminishment in Shh-dependent granule neuron progenitor proliferation in *ZIC1/4*-dependent DWM may account for the cerebellar hypoplasia seen in these DWM patients; however, *Zic* functions that are Shh-independent may also contribute to the DWM phenotype [59,60], distinguishing DWM from JSRD. The study of *Zic* mouse models is ongoing, as is the search for additional human DWM causative genes [61].

The del3q24 DWM human phenotype is extremely variable ranging from classic DWM to mild cerebellar vermis hypoplasia (CVH) — a small cerebellar vermis that is not accompanied by the enlargement of the fourth ventricle or enlarged posterior skull that is seen in classical DWM

[54**]. This suggests that CVH can represent one end of phenotypic spectrum with the same molecular pathogenesis as DWM. However, it is also clear CVH can also be distinct from DWM. For example, mutations in *Oligophrenin 1 (OPHN1)*, a widely expressed gene encoding a rhoGAP protein, cause X-linked mental retardation and CVH, but never DWM [62–64]. *In vitro* and *in vivo* experiments have demonstrated a role for *Ophn1* in dendritic spine morphogenesis in hippocampal neurons in mice, though no gross cerebellar anatomical abnormalities were observed in *Ophn1* mutant mice [65,66]. Thus, the basis of human *OPHN1*-dependent CVH remains obscure.

Developmental degenerative disorders

Numerous degenerative disorders of the mature cerebellum, known as spinal cerebellar ataxias (SCA), have been described in humans, many of which are caused by expanded CAG trinucleotide repeats leading to the progressive degeneration of PCs [67]. An intriguing recent paper demonstrates that compromising PC development, by expressing a toxic transgene early in development, contributes to the severity of the neurodegeneration in adult mice [68**]. These data suggest an overlap between development and degeneration, and that the eventual timing of the onset of degeneration is actually determined during prenatal life. Apparently, we can no longer think of development and degeneration as distinct entities. This is certainly the case with *PTF1A* mutations and cerebellar agenesis, as discussed above. A number of additional human cerebellar developmental degenerative disorders have been recognized and have been classified as pontocerebellar hypoplasia (PCH). PCH is characterized by the progressive atrophy of the ventral pons, inferior olive, and cerebellum, with onset during neonatal cerebellar development, but continuing after birth. At least three subtypes exist based on clinical and pathological features [50,69]. The first PCH gene has recently been reported as a loss-of-function of *RARS2*, encoding mitochondrial arginine-transfer RNA (tRNA) synthetase. This mutation was identified in a family with nonsyndromic PCH already evident at postnatal day 3 [70**]. Because *RARS2* is expressed in all cells, the mechanism of the neuron-specific phenotypes remains unclear. It will be fascinating to see this discovery translate into an improved understanding for the role of mitochondria in cerebellar development and homeostasis once appropriate mouse models are generated.

Conclusions

The cerebellum plays crucial roles in sensory integration, motor planning as well higher cognitive processing [71]. Despite its importance, we know surprisingly little about its development. The use of new fate-mapping strategies in mice has helped define unexpected origins for unique cellular populations within the cerebellum. Defining the genetic underpinnings of

some of the common causes of cerebellar malformations in humans holds the promise of improving diagnosis and prognostic information for these relatively common birth defects, as well as helping to uncover the unique molecular cues that are required for the development of the cerebellum across species.

References and recommended reading

Papers of particular interest, published over the period of the review, have been highlighted as:

- of special interest
- of outstanding interest

1. Sato T, Joyner AL, Nakamura H: **How does Fgf signaling from the isthmus induce midbrain and cerebellum development?** *Dev Growth Differ* 2004, **46**:487-494.

2. Chizhikov VV, Lindgren AG, Currie DS, Rose MF, Monuki ES, •• Millen KJ: **The roof plate regulates cerebellar cell-type specification and proliferation.** *Development* 2006, **133**:2793-2804.

Through genetic manipulation of the size of the cerebellar roof plate, the authors demonstrate that roof plate derived signals regulate proliferation within the cerebellar anlage and are required for rhombic lip specification, establishing the roof plate as a second major signaling center in cerebellar development.

3. Wilson LJ, Myat A, Sharma A, Maden M, Wingate RJ: **Retinoic acid is a potential dorsalising signal in the late embryonic chick hindbrain.** *BMC Dev Biol* 2007, **7**:138.

On the basis of extensive gene expression analysis, these authors pose the intriguing hypothesis that retinoic acid may be an important signaling molecule during late embryonic stages of cerebellar development.

4. Sgaier SK, Millet S, Villanueva MP, Berenshteyn F, Song C, •• Joyner AL: **Morphogenetic and cellular movements that shape the mouse cerebellum; insights from genetic fate mapping.** *Neuron* 2005, **45**:27-40.

The authors used genetic fate mapping of *Engrailed1* and *Engrailed2* to determine that the vermis is produced by expansion, rather than fusion, of the thin medial primordium, which may provide an explanation as to why the vermis is particularly vulnerable to defects in cell proliferation. These elegant genetic fate-mapping analyses also demonstrate how the initial anterior/posterior axis of dorsal rhombomere 1 is transformed into the medial/lateral axis of the cerebellum.

5. Louvi A, Alexandre P, Metin C, Wurst W, Wassef M: **The isthmus neuroepithelium is essential for cerebellar midline fusion.** *Development* 2003, **130**:5319-5330.

6. Chizhikov V, Millen KJ: **Development and malformations of the cerebellum in mice.** *Mol Genet Metab* 2003, **80**:54-65.

7. Hoshino M, Nakamura S, Mori K, Kawauchi T, Terao M, • Nishimura YV, Fukuda A, Fuse T, Matsuo N, Sone M *et al.*: **Ptf1a, a bHLH transcriptional gene, defines GABAergic neuronal fates in cerebellum.** *Neuron* 2005, **47**:201-213.

This is the first report demonstrating that Ptf1a is essential for cerebellar GABAergic neuronal specification through the analysis of a transgenic-insertion mutation in Ptf1a and Ptf1a-cre lineage analysis.

8. Pascual M, Abasolo I, Mingorance-Le Meur A, Martinez A, Del Rio JA, Wright CV, Real FX, Soriano E: **Cerebellar GABAergic progenitors adopt an external granule cell-like phenotype in the absence of Ptf1a transcription factor expression.** *Proc Natl Acad Sci U S A* 2007, **104**:5193-5198.

A stunning lineage analysis demonstrating that the loss of Ptf1a in cerebellar ventricular zone (GABAergic) progenitors causes a cell-fate switch to more dorsal rhombic lip (glutamatergic) fates.

9. Aldinger K, Elsen G: **Ptf1a is a molecular determinant for both glutamatergic and GABAergic neurons in the hindbrain.** *J Neurosci* 2008, **28**:5603.

10. Akazawa C, Ishibashi M, Shimizu C, Nakanishi S, Kageyama R: **A mammalian helix-loop-helix factor structurally related to the product of Drosophila proneural gene atonal is a positive transcriptional regulator expressed in the developing nervous system.** *J Biol Chem* 1995, **270**:8730-8738.

11. Ben-Arie N, McCall AE, Berkman S, Eichele G, Bellen HJ, Zoghbi HY: **Evolutionary conservation of sequence and expression of the bHLH protein Atonal suggests a conserved role in neurogenesis.** *Hum Mol Genet* 1996, **5**:1207-1216.

12. Kalinichenko SG, Okhotin VE: **Unipolar brush cells — a new type of excitatory interneuron in the cerebellar cortex and cochlear nuclei of the brainstem.** *Neurosci Behav Physiol* 2005, **35**:21-36.

13. Wang VY, Rose MF, Zoghbi HY: **Math1 expression redefines the rhombic lip derivatives and reveals novel lineages within the brainstem and cerebellum.** *Neuron* 2005, **48**:31-43.

14. Machold R, Fishell G: **Math1 is expressed in temporally discrete pools of cerebellar rhombic-lip neural progenitors.** *Neuron* 2005, **48**:17-24.

15. Wingate R: **Math-Map(ic)s.** *Neuron* 2005, **48**:1-4.

16. Englund C, Kowalczyk T, Daza RA, Dagan A, Lau C, Rose MF, •• Hevner RF: **Unipolar brush cells of the cerebellum are produced in the rhombic lip and migrate through developing white matter.** *J Neurosci* 2006, **26**:9184-9195.

This is an elegant study using embryonic cerebellar slice cultures showing a rhombic lip origin for unipolar brush cells.

17. Fink AJ, Englund C, Daza RA, Pham D, Lau C, Nivison M, • Kowalczyk T, Hevner RF: **Development of the deep cerebellar nuclei: transcription factors and cell migration from the rhombic lip.** *J Neurosci* 2006, **26**:3066-3076.

A transcription factor cascade involving Tbr, NeuroD, and Pax6 seen in cerebral cortex interneuron development is also conserved in cerebellar rhombic lip descendants.

18. Hevner RF, Hodge RD, Daza RA, Englund C: **Transcription factors in glutamatergic neurogenesis: conserved programs in neocortex, cerebellum, and adult hippocampus.** *Neurosci Res* 2006, **55**:223-233.

19. Ben-Arie N, Bellen HJ, Armstrong DL, McCall AE, Gordadze PR, Guo Q, Matzuk MM, Zoghbi HY: **Math1 is essential for genesis of cerebellar granule neurons.** *Nature* 1997, **390**:169-172.

20. Alder J, Cho NK, Hatten ME: **Embryonic precursor cells from the rhombic lip are specified to a cerebellar granule neuron identity.** *Neuron* 1996, **17**:389-399.

21. Machold RP, Kittell DJ, Fishell GJ: **Antagonism between Notch and bone morphogenetic protein receptor signaling regulates neurogenesis in the cerebellar rhombic lip.** *Neural Dev* 2007, **2**:5.

The authors delineate a new and crucial role for Notch within the cerebellar ventricular zone. Using retroviral gain-of-function and conditional loss-of-function analysis in mice, they demonstrate that Notch in the cerebellar ventricular zone antagonizes Bmp signals from the roof plate, which are required to induce the cerebellar rhombic lip. Notch signaling therefore sets a ventral limit on the size of the cerebellar rhombic lip.

22. Kumar M, Melton D: **Pancreas specification: a budding question.** *Curr Opin Genet Dev* 2003, **13**:401-407.

23. Sellick GS, Barker KT, Stolte-Dijkstra I, Fleischmann C, Coleman RJ, Garrett C, Gloy AL, Edgill EL, Hattersley AT, Wellauer PK *et al.*: **Mutations in PTF1A cause pancreatic and cerebellar agenesis.** *Nat Genet* 2004, **36**:1301-1305.

25. Joubert M, Eisenring JJ, Robb JP, Andermann F: **Familial agenesis of the cerebellar vermis. A syndrome of episodic hyperpnea, abnormal eye movements, ataxia, and retardation.** *Neurology* 1969, **19**:813-825.

26. Maria BL, Boltshauser E, Palmer SC, Tran TX: **Clinical features and revised diagnostic criteria in Joubert syndrome.** *J Child Neurol* 1999, **14**:583-590 discussion 590-581.

27. Gherman A, Davis EE, Katsanis N: **The ciliary proteome database: an integrated community resource for the genetic and functional dissection of cilia.** *Nat Genet* 2006, **38**:961-962.

28. Dixon-Salazar T, Silhavy JL, Marsh SE, Louie CM, Scott LC, •• Gururaj A, Al-Gazali L, Al-Tawari AA, Kayserili H, Sztriha L *et al.*: **Mutations in the AHI1 gene, encoding Joubertin, cause Joubert syndrome with cortical polymicrogyria.** *Am J Hum Genet* 2004, **75**:979-987.

Along with [29**], this paper depicts the first report of positional cloning of a gene for the classical type of Joubert syndrome, which turned out to

18 Development

be *Ableson-helper integration-1*, encoding a modular scaffolding protein of unknown function.

29. Ferland RJ, Eyaid W, Collura RV, Tully LD, Hill RS, Al-Nouri D, Al-Rumayyan A, Topcu M, Gascon G, Bodell A *et al.*: **Abnormal cerebellar development and axonal decussation due to mutations in *AHI1* in Joubert syndrome.** *Nat Genet* 2004, **36**:1008-1013.

See annotation to [28**].

30. Castori M, Valente EM, Donati MA, Salvi S, Fazzi E, Procopio E, Galluccio T, Emma F, Dallapiccola B, Bertini E: **NPHP1 gene deletion is a rare cause of Joubert syndrome related disorders.** *J Med Genet* 2005, **42**:e9.

31. Parisi MA, Bennett CL, Eckert ML, Dobyms WB, Gleeson JG, Shaw DW, McDonald R, Eddy A, Chance PF, Glass IA: **The NPHP1 gene deletion associated with juvenile nephronophthisis is present in a subset of individuals with Joubert syndrome.** *Am J Hum Genet* 2004, **75**:82-91.

32. Valente EM, Silhavy JL, Brancati F, Barrano G, Krishnaswami SR, Castori M, Lancaster MA, Boltshauser E, Boccone L, Al-Gazali L *et al.*: **Mutations in *CEP290*, which encodes a centrosomal protein, cause pleiotropic forms of Joubert syndrome.** *Nat Genet* 2006, **38**:623-625.

Along with [33**,38**,39**], this paper depicts the first report of mutations in the *Centrosomal associated protein 290* gene as responsible for Joubert syndrome type B, also mutated in mouse *rd16*, cat *rdAC*, and humans with retinal degeneration.

33. Sayer JA, Otto EA, O'Toole JF, Nurnberg G, Kennedy MA, Becker C, Hennies HC, Helou J, Attanasio M, Fausett BV *et al.*: **The centrosomal protein nephrocystin-6 is mutated in Joubert syndrome and activates transcription factor ATF4.** *Nat Genet* 2006, **38**:674-681.

See annotation to [32**].

34. Baala L, Romano S, Khaddour R, Saunier S, Smith UM, Audoulet S, Ozilou C, Faivre L, Laurent N, Foliguet B *et al.*: **The Meckel-Gruber syndrome gene, *MKS3*, is mutated in Joubert syndrome.** *Am J Hum Genet* 2007, **80**(1):186-194.

35. Arts HH, Doherty D, van Beersum SE, Parisi MA, Letteboer SJ, Gorden NT, Peters TA, Marker T, Voeseinek K, Kartono A *et al.*: **Mutations in the gene encoding the basal body protein RPGRIP1L, a nephrocystin-4 interactor, cause Joubert syndrome.** *Nat Genet* 2007, **39**:882-888.

Along with [36*], this paper identifies the RPGRIP1L gene for JSRD through linkage analysis.

36. Delous M, Baala L, Salomon R, Laclef C, Vierkotten J, Tory K, Golzio C, Lacoste T, Besse L, Ozilou C *et al.*: **The ciliary gene RPGRIP1L is mutated in cerebello-oculo-renal syndrome (Joubert syndrome type B) and Meckel syndrome.** *Nat Genet* 2007, **39**:875-881.

See annotation to [35*].

37. Otto EA, Schermer B, Obara T, O'Toole JF, Hiller KS, Mueller AM, Ruf RG, Hoefele J, Beekmann F, Landau D *et al.*: **Mutations in *INVS* encoding inversin cause nephronophthisis type 2, linking renal cystic disease to the function of primary cilia and left-right axis determination.** *Nat Genet* 2003, **34**:413-420.

38. Chang B, Khanna H, Hawes N, Jimeno D, He S, Lillo C, Parapuram SK, Cheng H, Scott A, Hurd RE *et al.*: **In-frame deletion in a novel centrosomal/ciliary protein *CEP290/NPHP6* perturbs its interaction with RPGR and results in early-onset retinal degeneration in the *rd16* mouse.** *Hum Mol Genet* 2006, **15**:1847-1857.

See annotation to [32**].

39. Menotti-Raymond M, David VA, Schaffer AA, Stephens R, Wells D, Kumar-Singh R, O'Brien SJ, Narfstrom K: **Mutation in *CEP290* discovered for cat model of human retinal degeneration.** *J Hered* 2007, **98**:211-220.

See annotation to [32**].

40. McEwen DP, Koenekoop RK, Khanna H, Jenkins PM, Lopez I, Swaroop A, Martens JR: **Hypomorphic *CEP290/NPHP6* mutations result in anosmia caused by the selective loss of G proteins in cilia of olfactory sensory neurons.** *Proc Natl Acad Sci U S A* 2007, **104**:15917-15922.

41. Brancati F, Barrano G, Silhavy JL, Marsh SE, Travaglini L, Bielas SL, Amorini M, Zablocka D, Kayserili H, Al-Gazali L *et al.*: **CEP290 mutations are frequently identified in the oculo-renal form of Joubert syndrome-related disorders.** *Am J Hum Genet* 2007, **81**:104-113.

42. Del Cerro MP, Snider RS: **The Purkinje cell cilium.** *Anat Rec* 1969, **165**:127-130.

43. Del Cerro MP, Snider RS: **Studies on the developing cerebellum. II. The ultrastructure of the external granular layer.** *J Comp Neurol* 1972, **144**:131-164.

44. Chizhikov VV, Davenport J, Zhang Q, Shih EK, Cabello OA, Fuchs JL, Yoder BK, Millen KJ: **Cilia proteins control cerebellar morphogenesis by promoting expansion of the granule progenitor pool.** *J Neurosci* 2007, **27**:9780-9789.

Along with [45*], this paper used several different mouse models with defective or absent cilia and found strong defects in cerebellar development primarily caused by decreased granule neuron proliferation because of defective Sonic hedgehog signaling, suggesting that defective Shh signaling is the primary cause of cerebellar defects in JSRD.

45. Spassky N, Han YG, Aguilar A, Strehl L, Besse L, Laclef C, Romaguera Ros M, Garcia-Verdugo JM, Alvarez-Buylla A: **Primary cilia are required for cerebellar development and Shh-dependent expansion of progenitor pool.** *Dev Biol* 2008.

See annotation to [44*].

46. Huangfu D, Anderson KV: **Cilia and Hedgehog responsiveness in the mouse.** *Proc Natl Acad Sci U S A* 2005, **102**:11325-11330.

47. Caspary T, Larkins CE, Anderson KV: **The graded response to Sonic Hedgehog depends on cilia architecture.** *Dev Cell* 2007, **12**:767-778.

48. Corbit KC, Shyer AE, Dowdle WE, Gaulden J, Singla V, Chen MH, Chuang PT, Reiter JF: **Kif3a constrains beta-catenin-dependent Wnt signalling through dual ciliary and non-ciliary mechanisms.** *Nat Cell Biol* 2008, **10**:70-76.

49. Gerdes JM, Liu Y, Zaghoul NA, Leitch CC, Lawson SS, Kato M, Beachy PA, Beales PL, DeMartino GN, Fisher S *et al.*: **Disruption of the basal body compromises proteasomal function and perturbs intracellular Wnt response.** *Nat Genet* 2007, **39**:1350-1360.

50. Parisi MA, Dobyms WB: **Human malformations of the midbrain and hindbrain: review and proposed classification scheme.** *Mol Genet Metab* 2003, **80**:36-53.

51. Forzano F, Mansour S, Ierullo A, Homfray T, Thilaganathan B: **Posterior fossa malformation in fetuses: a report of 56 further cases and a review of the literature.** *Prenat Diagn* 2007, **27**:495-501.

52. Jalali A, Aldinger KA, Chary A, McLone DG, Bowman RM, Le LC, Jardine P, Newbury-Ecob R, Mallick A, Jafari N *et al.*: **Linkage to chromosome 2q36.1 in autosomal dominant Dandy-Walker malformation with occipital cephalocele and evidence for genetic heterogeneity.** *Hum Genet* 2008:5604.

Linkage analysis in an extended pedigree segregating DWM and a posterior skull defect locates the causative locus to chromosome 2q36. The locus for an additional pedigree segregating the same phenotype, however, does not overlap, suggesting that there are multiple causes for this phenotype.

53. Murray JC, Johnson JA, Bird TD: **Dandy-Walker malformation: etiologic heterogeneity and empiric recurrence risks.** *Clin Genet* 1985, **28**:272-283.

54. Grinberg I, Northrup H, Ardinger H, Prasad C, Dobyms WB, Millen KJ: **Heterozygous deletion of the linked genes *ZIC1* and *ZIC4* is involved in Dandy-Walker malformation.** *Nat Genet* 2004, **36**:1053-1055.

This is the first report of mutations in the *ZIC1* and *ZIC4* as deleted in Dandy-Walker syndrome.

55. Koyabu Y, Nakata K, Mizugishi K, Aruga J, Mikoshiba K: **Physical and functional interactions between *Zic* and *Gli* proteins.** *J Biol Chem* 2001, **276**:6889-6892.

56. Nguyen V, Chokas AL, Stecca B, Altaba AR: **Cooperative requirement of the *Gli* proteins in neurogenesis.** *Development* 2005, **132**:3267-3279.

57. Aruga J: **The role of Zic genes in neural development.** *Mol Cell Neurosci* 2004, **26**:205-221.
58. Aruga J, Minowa O, Yaginuma H, Kuno J, Nagai T, Noda T, Mikoshiba K: **Mouse Zic1 is involved in cerebellar development.** *J Neurosci* 1998, **18**:284-293.
59. Ebert PJ, Timmer J, Nakada Y, Helms AW, Preeti B, Liu Y, Hunsaker TL, Johnson JE: **Zic1 represses Math1 expression via interactions with the Math1 enhancer and modulation of Math1 autoregulation.** *Development* 2003, **130**:1949-1959.
60. Sanek NA, Grinblat Y: **A novel role for zebrafish zic2a during forebrain development.** *Dev Biol* 2008, **317**:325-335.
61. Millen KJ, Grinberg I, Blank M, Dobyns WB: **ZIC1, ZIC4 and Dandy-Walker malformation.** In *Inborn Errors of Development*, edn 2. Edited by Epstein CJ, Erickson RP, Wynshaw-Boris A. Oxford University Press; 2008.
62. Tentler D, Gustavsson P, Leisti J, Schueler M, Chelly J, Timonen E, Anneren G, Willard HF, Dahl N: **Deletion including the oligophrenin-1 gene associated with enlarged cerebral ventricles, cerebellar hypoplasia, seizures and ataxia.** *Eur J Hum Genet* 1999, **7**:541-548.
63. Philip N, Chabrol B, Lossi AM, Cardoso C, Guerrini R, Dobyns WB, Raybaud C, Villard L: **Mutations in the oligophrenin-1 gene (OPHN1) cause X linked congenital cerebellar hypoplasia.** *J Med Genet* 2003, **40**:441-446.
64. Zanni G, Saillour Y, Nagara M, Billuart P, Castelnau L, Moraine C, Faivre L, Bertini E, Durr A, Guichet A *et al.*: **Oligophrenin 1 mutations frequently cause X-linked mental retardation with cerebellar hypoplasia.** *Neurology* 2005, **65**:1364-1369.
65. Govek EE, Newey SE, Akerman CJ, Cross JR, Van der Veken L, Van Aelst L: **The X-linked mental retardation protein oligophrenin-1 is required for dendritic spine morphogenesis.** *Nat Neurosci* 2004, **7**:364-372.
66. Khelifaoui M, Denis C, van Galen E, de Bock F, Schmitt A, Houbron C, Morice E, Giros B, Ramakers G, Fagni L *et al.*: **Loss of X-linked mental retardation gene oligophrenin1 in mice impairs spatial memory and leads to ventricular enlargement and dendritic spine immaturity.** *J Neurosci* 2007, **27**: 9439-9450.
67. Lim J, Hao T, Shaw C, Patel AJ, Szabo G, Rual JF, Fisk CJ, Li N, Smolyar A, Hill DE *et al.*: **A protein-protein interaction network for human inherited ataxias and disorders of Purkinje cell degeneration.** *Cell* 2006, **125**:801-814.
68. Serra HG, Duvick L, Zu T, Carlson K, Stevens S, Jorgensen N, Lysholm A, Burright E, Zoghbi HY, Clark HB *et al.*: **RORalpha-mediated Purkinje cell development determines disease severity in adult SCA1 mice.** *Cell* 2006, **127**:697-708.
- No longer can we think of developmental abnormalities and Purkinje cell degenerative disorders as separate entities. Using transgenic analysis, these authors demonstrate that a developmental compromise in early Purkinje cell development advances the age of onset of SCA1-mediated Purkinje cell degeneration.
69. Barth PG: **Pontocerebellar hypoplasia — how many types?** *Eur J Paediatr Neurol* 2000, **4**:161-162.
70. Edvardson S, Shaag A, Kolesnikova O, Gomori JM, Tarassov I, Einbinder T, Saada A, Elpeleg O: **Deleterious mutation in the mitochondrial arginyl-transfer RNA synthetase gene is associated with pontocerebellar hypoplasia.** *Am J Hum Genet* 2007, **81**:857-862.
- Reported a consanguineous Sephardic Jewish family with three patients displaying severe infantile encephalopathy associated with pontocerebellar hypoplasia and multiple mitochondrial respiratory-chain defects. This resulted in the identification of an intronic mutation in the RARS2 gene, encoding mitochondrial arginine-transfer RNA synthetase. The authors speculate that this splicing mutation preferentially affects the brain because of a tissue-specific vulnerability of splicing machinery.
71. Ito M: **Control of mental activities by internal models in the cerebellum.** *Nat Rev Neurosci* 2008, **9**:304-313.
72. An excellent recent review of major mechanism of cerebellar morphogenesis and circuit formation.